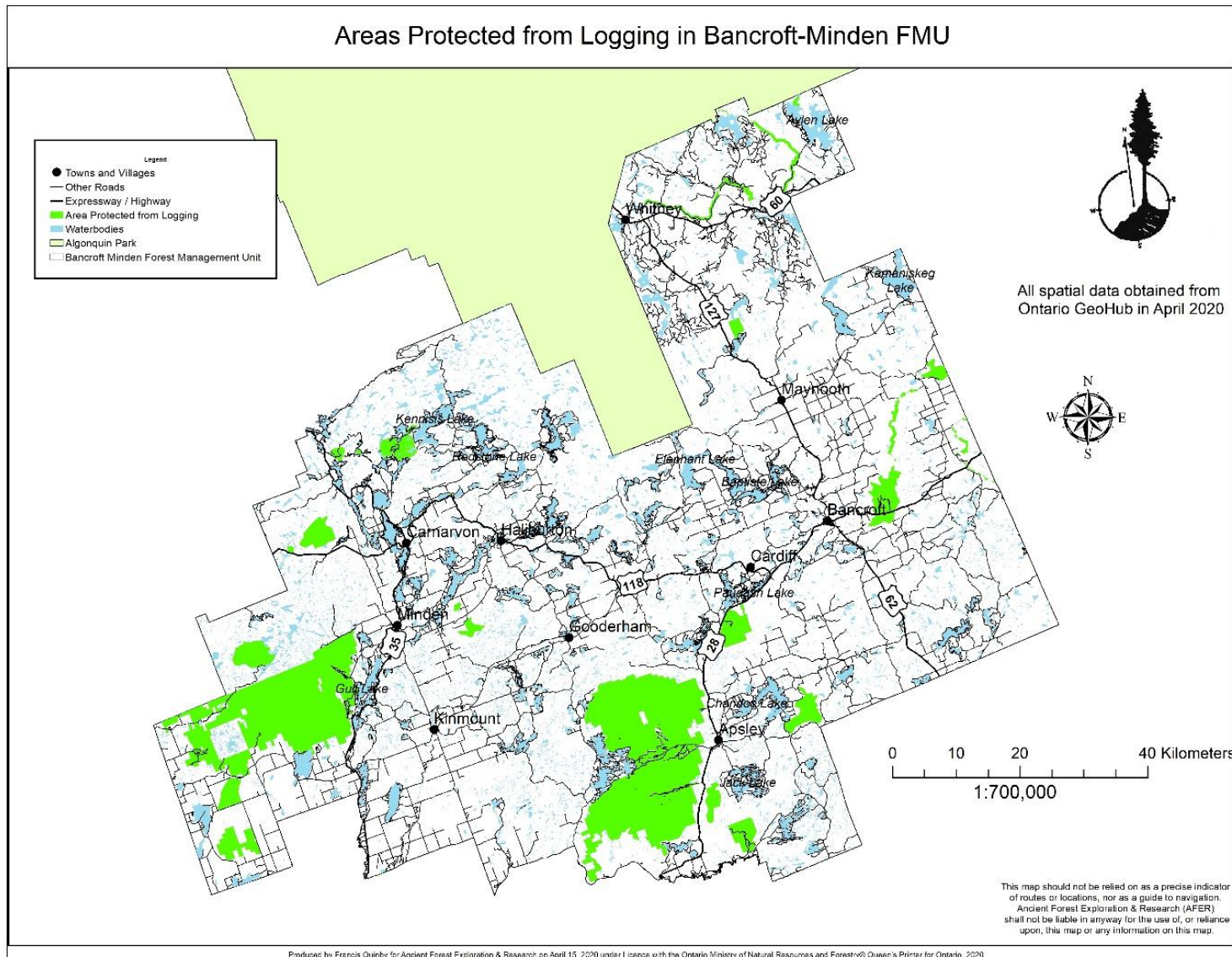


Official Protected Areas in the Bancroft-Minden Forest Company Region of Ontario: Map and Table with Protected Area Size

Ancient Forest Exploration & Research (peterborougholdgrowth.ca)
July 8, 2021



Bancroft Minden Forest Company Region - 9% of Lands Protected

SUMMARY	PROTECTED AREA TYPE	HA
TOTAL PROTECTED AREAS IN THE BM-FMU		89,086
TOTAL SIZE OF BM-FMU		991,411
PROTECTED AREA NAME		
KAWARTHA HIGHLANDS SIGNATURE SITE PARK (NATURAL ENVIRONMENT CLASS)	Provincial Park	37,203
QUEEN ELIZABETH II WILDLANDS PROVINCIAL PARK (NATURAL ENVIRONMENT CLASS)	Provincial Park	28,472
Egan Chute	ANSI, Life Science	2,223
Longford Barrens	Candidate ANSI, Life Science	2,031
CARDEN ALVAR PROVINCIAL PARK (NATURAL ENVIRONMENT CLASS)	Provincial Park	1,917
Anson Hemlock	Candidate ANSI, Life Science	1,661
Crowe River Swamp	ANSI, Life Science	1,631
SILENT LAKE PROVINCIAL PARK (NATURAL ENVIRONMENT CLASS)	Provincial Park	1,236
PETROGLYPHS PROVINCIAL PARK (CULTURAL HERITAGE CLASS)	Provincial Park	1,236
Carden Alvar	ANSI, Life Science	1,204
OPEONGO RIVER PROVINCIAL PARK (WATERWAY CLASS)	Provincial Park	873
CLEAR LAKE CONSERVATION RESERVE	Conservation Reserve	864
UPPER MADAWASKA RIVER PROVINCIAL PARK (WATERWAY CLASS)	Provincial Park	856
EGAN CHUTES PROVINCIAL PARK ADDITION (WATERWAY CLASS)	Provincial Park	619
Lochlin Bog	Candidate ANSI, Life Science	530
SHARPE BAY FEN CONSERVATION RESERVE	Conservation Reserve	517
LAKE ST. PETER PROVINCIAL PARK (RECREATIONAL CLASS)	Provincial Park	448
CLEAR LAKE CONSERVATION RESERVE	Conservation Reserve	441
CONROYS MARSH CONSERVATION RESERVE	Conservation Reserve	423
Silent Lake - Lowrie Lakes	Candidate ANSI, Life Science	415
KAWARTHA HIGHLANDS SIGNATURE SITE PARK (NATURAL ENVIRONMENT CLASS)	Provincial Park	356
EGAN CHUTES PROVINCIAL PARK (NATURE RESERVE CLASS)	Provincial Park	343
PETROGLYPHS PROVINCIAL PARK (CULTURAL HERITAGE CLASS)	Provincial Park	342
LITTLE MISSISSIPPI RIVER CONSERVATION RESERVE	Conservation Reserve	324
Sharpe Bay Fen	Candidate ANSI, Life Science	288
Upper Madawaska River Provincial Park	ANSI, Life Science	280
Conroy Marsh	Candidate ANSI, Life Science	243

PLASTIC LAKE AND DAWSON PONDS CONSERVATION RESERVE	Conservation Reserve	234
CROWE RIVER SWAMP CONSERVATION RESERVE	Conservation Reserve	186
EGAN CHUTES PROVINCIAL PARK ADDITION (WATERWAY CLASS)	Provincial Park	167
Clear Lake	ANSI, Life Science	152
SILENT LAKE PROVINCIAL PARK (NATURAL ENVIRONMENT CLASS)	Provincial Park	152
Kennisis River	Candidate ANSI, Life Science	130
SHARPE BAY FEN CONSERVATION RESERVE	Conservation Reserve	125
Lochlin Esker	Candidate ANSI, Earth Science	103
SILENT LAKE PROVINCIAL PARK (NATURAL ENVIRONMENT CLASS)	Provincial Park	103
Aylen Lake Cliff	Candidate ANSI, Life Science	98
Bentshoe Lake	Candidate ANSI, Life Science	93
SILENT LAKE PROVINCIAL PARK (NATURAL ENVIRONMENT CLASS)	Provincial Park	91
OPEONGO RIVER PROVINCIAL PARK (WATERWAY CLASS)	Provincial Park	88
PLASTIC LAKE AND DAWSON PONDS CONSERVATION RESERVE	Conservation Reserve	61
Upper Madawaska River Provincial Park	ANSI, Life Science	56
Dawson Ponds/ Plastic Lake	Candidate ANSI, Life Science	56
Sherborne Lake	Candidate ANSI, Life Science	49
CONROYS MARSH CONSERVATION RESERVE	Conservation Reserve	34
SILENT LAKE PROVINCIAL PARK (NATURAL ENVIRONMENT CLASS)	Provincial Park	27
Opeongo R.P.P. Provincial Nature Reserve	ANSI, Life Science	24
West Guilford	Candidate ANSI, Life Science	20
Tory Hill Formation	Candidate ANSI, Earth Science	19
QUEEN ELIZABETH II WILDLANDS PROVINCIAL PARK (NATURAL ENVIRONMENT CLASS)	Provincial Park	14
Burnt River Mouth Wetlands	ANSI, Life Science	10
Buttermilk Falls	Candidate ANSI, Life Science	8
CROWE RIVER SWAMP CONSERVATION RESERVE	Conservation Reserve	3
Johnston Lake Bog	ANSI, Life Science	2
Bottle Creek (Kawartha Highlands Pk)	ANSI, Life Science	2
Kirkfield Liftlock	ANSI, Earth Science	2
Silent Lake Provincial Park Nature Reserve Zone4	ANSI, Life Science	2
Peteroglyphs Park Barrens	ANSI, Life Science	1
ALGONQUIN PROVINCIAL PARK (NATURAL ENVIRONMENT CLASS)	Provincial Park	1